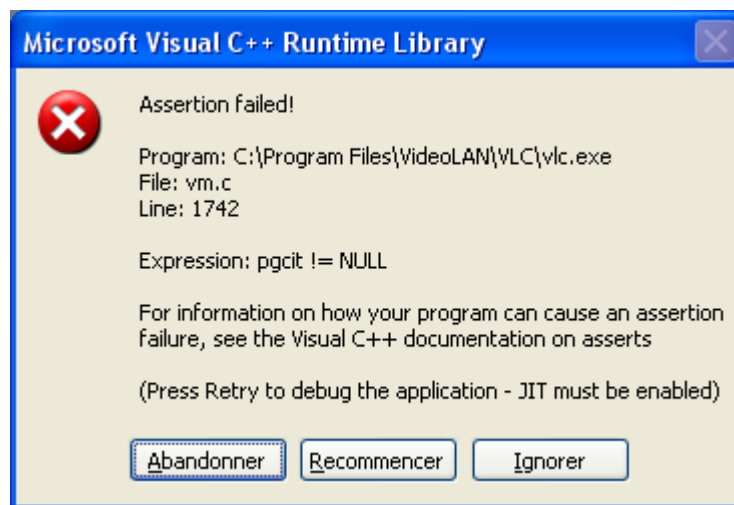
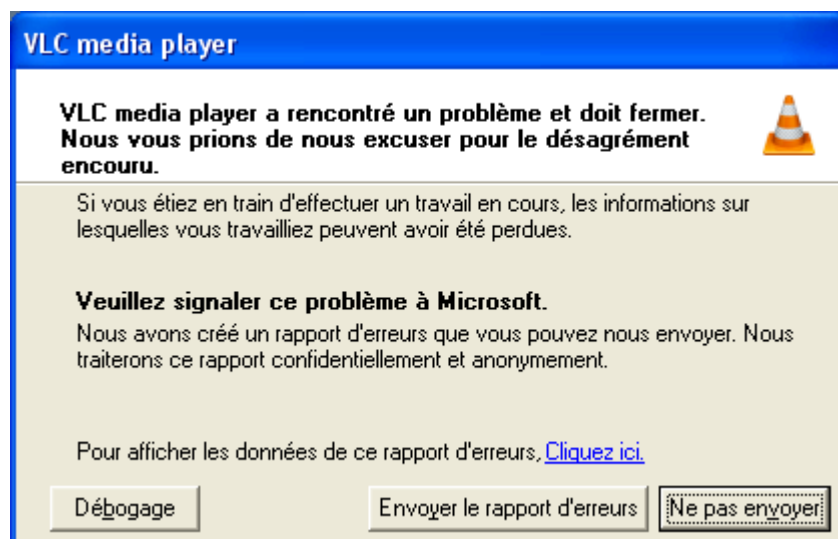


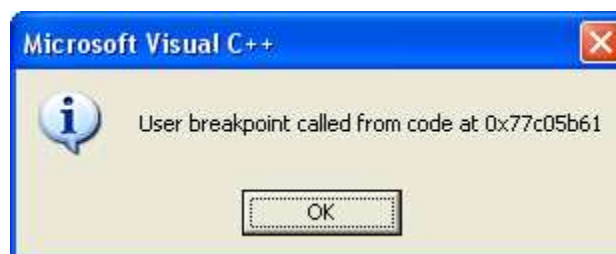
Erreur VLC dès la reconnaissance du DVD version 0.8.5



Clic sur **Recommencer**



Clic sur **Débugage**



Clic sur **OK**

vlc - Microsoft Visual C++ [break] - [Disassembly]
File Edit View Insert Project Debug Tools Window Help
endif

```

77C05B07  mov     ecx,eax
77C05B09  shr     ecx,2
77C05B0C  mov     esi,edx
77C05B0E  rep movs dword ptr [edi],dword ptr [esi]
77C05B10  mov     ecx,eax
77C05B12  and     ecx,ebx
77C05B14  rep movs byte ptr [edi],byte ptr [esi]
77C05B16  lea    edi,[ebp-220h]
77C05B1C  dec     edi
77C05B1D  mov     al,byte ptr [edi+1]
77C05B20  inc     edi
77C05B21  test   al,al
77C05B23  jne    77C05B1D
77C05B25  push   0Fh
77C05B27  pop    ecx
77C05B28  mov     esi,77BE2CE8h
77C05B2D  rep movs dword ptr [edi],dword ptr [esi]
77C05B2F  push   12012h
77C05B34  lea    eax,[ebp-220h]
77C05B3A  push   77BE2CC0h
77C05B3F  push   eax
77C05B40  movs   byte ptr [edi],byte ptr [esi]
77C05B41  call   77C0920A
77C05B46  add    esp,0Ch
77C05B49  cmp    eax,ebx
77C05B4B  pop    edi
77C05B4C  jne    77C05B5C
77C05B4E  push   16h
77C05B50  call   77C0518D
77C05B55  pop    ecx
77C05B56  push   ebx
77C05B57  call   77C09E9A
77C05B5C  cmp    eax,4
77C05B5F  jne    77C05B6E
77C05B61  int    3
77C05B62  mov    ecx,dword ptr [ebp-4]
77C05B65  pop    esi
77C05B66  pop    ebx
77C05B67  call   77C27993
77C05B6C  leave
77C05B6D  ret

```

Context: MSVCRT! 77c05b61()

Name	Value

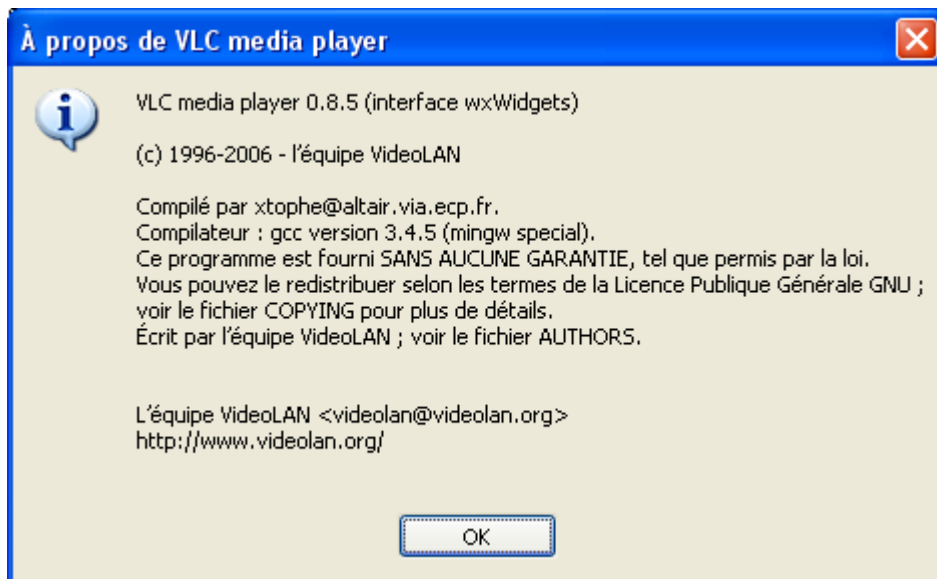
Auto Locals this

Name	Value

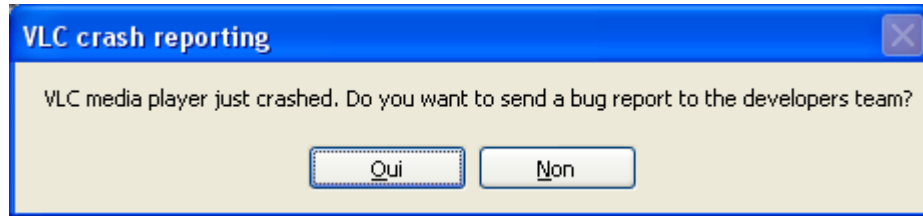
Watch1 Watch2 Watch3 Watch4

Ready

Version de VLC utilisée



Erreur VLC dès la reconnaissance du DVD version 1.1.1



clic sur Oui

VLC 1.1.1 se met en route normalement et attend l'ouverture d'un fichier.
Aucune fonction de debug ne s'active.
Le choix du fichier à ouvrir étant fait, VLC se poursuit correctement.

Version de VLC utilisée

